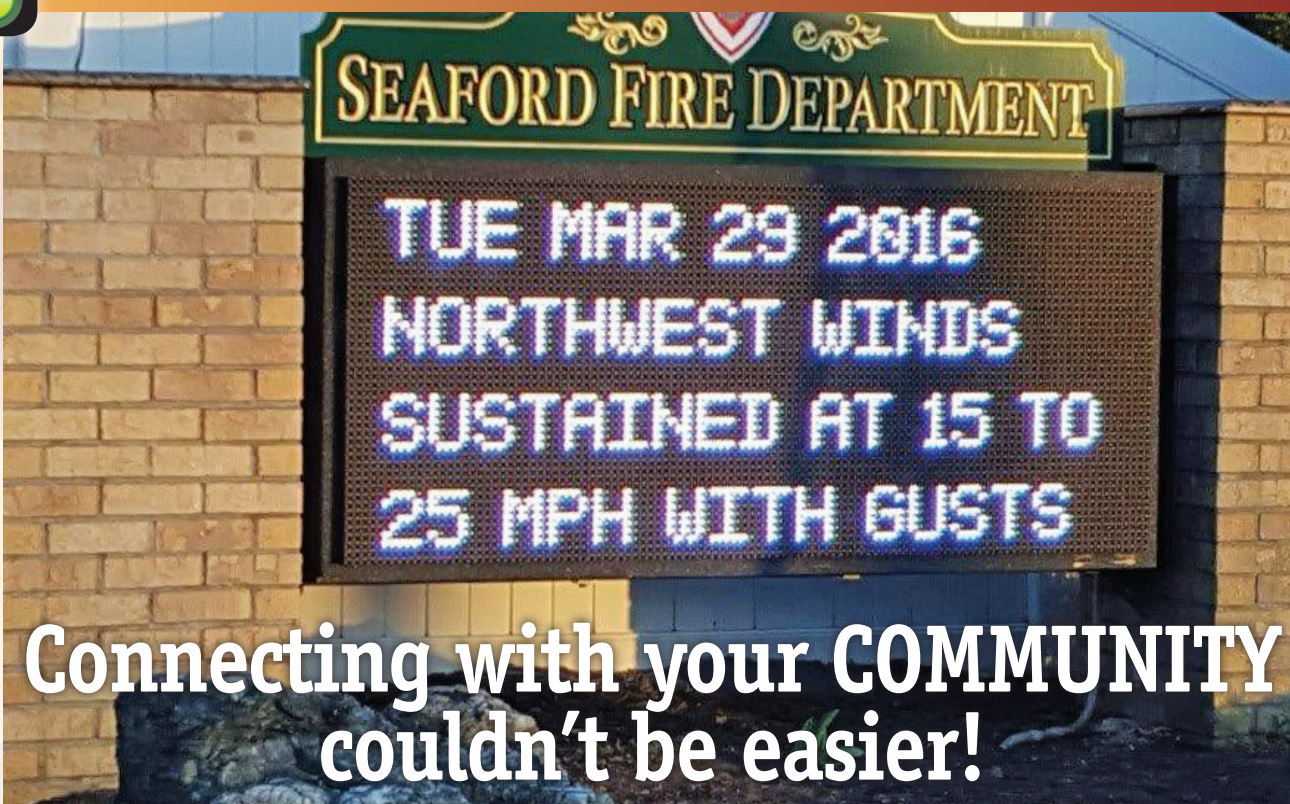




www.visualinfocorp.com

Fire District Signage



Connecting with your **COMMUNITY** couldn't be easier!



Our LED signage solutions are the most convenient way to get your messages out. High impact LEDs draw far more attention than your old manual letter board. The quickest way to promote an event or a fundraiser, LED signs are PROVEN to increase participation & awareness & will stimulate involvement. Displaying public safety messages convey your first and foremost concern; your community's safety. Displaying your district's performance each month, displaying budget or board meeting calendars or publicizing your website will do the job of keeping your community informed at all times.

VISCO BENEFITS

- Bonded 7 Years Parts and On-site labor at no extra charge
- One-Source from Concept to Implementation
- Engineering Services: Site Surveys, Drawings, Structures
- Full Cloud-based software
- Quick Response time Remote Real Time access and viewing
- Local IPAWS NOAA Alerts automatic Alerts Automatically Displayed on your sign
- One Number Dial for Service Certified Service Personnel
- Large Professional Graphics Video Libraries Included
- Custom Creation Package professional content included
- Multi-level Software Training
- Lifetime Visual Information Staff Customer Support



VIS

Visual Information Services

info@visualinfocorp.com

800-777-3565

LED Sign Solutions Since 1991



www.visualinfocorp.com

Fire District Signage



12mm Full Color

- Vivid 281 Trillion color palette
- Solid State 40 gig IPC internal Sign Controller
- 60 frames per second 2400 Hz scan ratio
- 180 degrees viewing angle
- No external temperature probe temperature reading based on you Google address
- Base Character size 3.5"
- Choice of Slimline or frameless cabinet
- Full Cloud Software and free Android and iPad/iPhone Apps

SHOWN: SLIMLINE FRAME

LED Portion display shown left: 160 x 352 Matrix Active display area 40" H x 87" L



16mm Full Color

- Vivid 281 Trillion color palette
- Solid State 40 gig IPC internal Sign Controller
- 60 frames per second 2400 Hz scan ratio
- 180 degrees viewing angle
- No external temperature probe temperature reading based on you Google address
- Base Character size 4.5"
- Choice of Slimline or frameless cabinet
- Full Cloud Software and free Android and iPad/iPhone Apps

SHOWN: SLIMLINE FRAME

LED Portion display shown left: 64 x 144 Matrix Active display area 41" H x 81" L

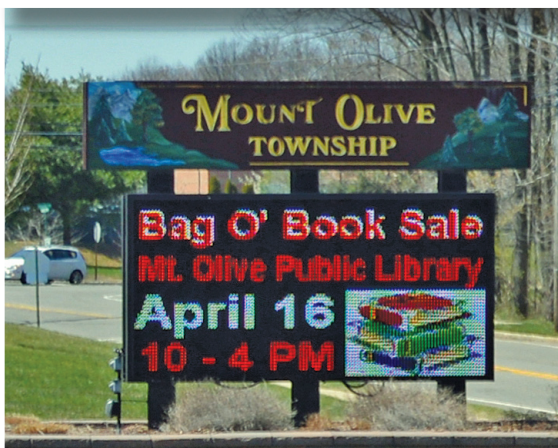


20mm Full Color

- Vivid 281 Trillion color palette
- Solid State 40 gig IPC internal Sign Controller
- 60 frames per second 2400 Hz scan ratio
- 180 degrees viewing angle
- No external temperature probe temperature reading based on you Google address
- Base Character size 5.5"
- Choice of Slimline or frameless cabinet
- Full Cloud Software and free Android and iPad/iPhone Apps

SHOWN: FRAMELESS DESIGN

LED Portion display shown left: 48 x 96 Matrix Active display area 38" H x 76" L



25mm Full Color

- Vivid 281 Trillion color palette
- Solid State 40 gig IPC internal Sign Controller
- 60 frames per second 2400 Hz scan ratio
- 180 degrees viewing angle
- No external temperature probe temperature reading based on you Google address
- Base Character size 7"
- Choice of Slimline or frameless cabinet
- Full Cloud Software and free Android and iPad/iPhone Apps

SHOWN: SLIMLINE FRAME

LED Portion display shown left: 56 x 112 Matrix Active display area 47" H x 97" L

Go "GREEN" with ECO-EFFICIENT LEDs

LEDs are more energy efficient than any other type of lighting as LEDs convert energy to light. They are safe, mercury-free and lead-free illumination using very little voltage. They are long-lasting (up to 10 times longer than traditional lighting for signage). LED signage helps to reduce paper costs by reducing the number of mailings, print bulletins and banner costs, thereby saving our forests as well.

Proven Reputation

"We have worked for years with Visual Information Services. Our new full color video display at the train station is fantastic. Their large professional video and graphic library help supplement the easy-to-use cloud software message creations we display on the sign. They are always there at any time to help. If we have an issue, they are right on top of it."

John Fabian

District Manager, Bellmore Fire District

"We love our full color sign. The graphics are awesome. I love that we get monthly-included professional graphics and animations that I can request right through the cloud software. On a late Saturday afternoon, I was away from my laptop and a board member was turning 94. I emailed Visual Information and they had it up on the sign that evening."

Thank you again! They are awesome people."

Chuck Bissinger

Coldenham Fire and Rescue



info@visualinfocorp.com

800-777-3565

©2017 Copyright Visual Information Services